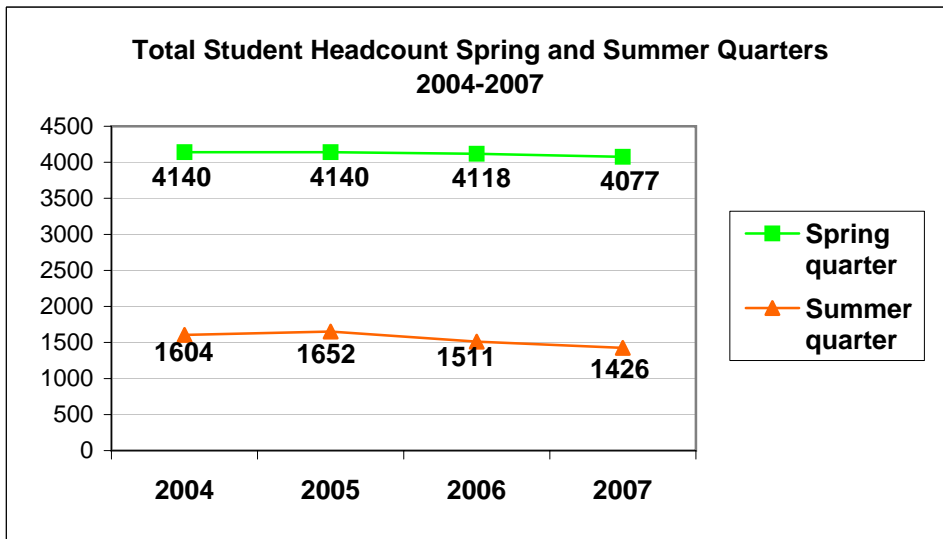


Summer School Enrollment Trends

Headcount

Summer quarter headcount enrollment has decreased 178 students since 2004. Part of this decline could be a result of fewer students being enrolled in the preceding spring quarter; however, the rate of headcount decline has been greater in summer than in spring. Summer 2006 marked the point of greatest decline in headcount with 141 fewer students enrolled than in Summer 2005.

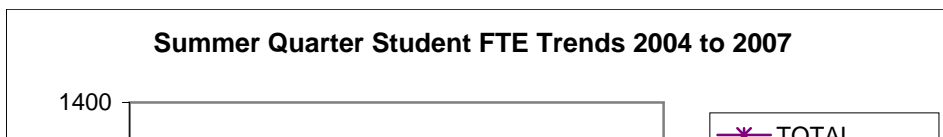
	2004	2005	2006	2007	change 2007-2004	rate of change from 2004
Headcount						
Spring qua	4140	4140	4118	4077	-63	-1.5%
Summer qu	1604	1652	1511	1426	-178	-11.1%



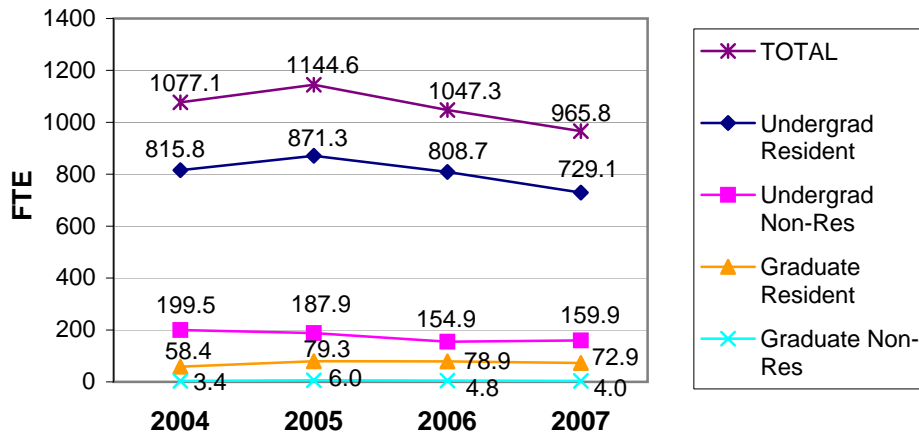
Summer School FTE (Evergreen employee and American Indian waivers excluded)

The drop of 178 students translates to a drop of 111 FTE (waivers excluded) in this four-year period. This means that the students who are enrolling for summer quarter are taking more credits, since the loss in FTE is not as great as the loss in headcount. FTE loss has been in undergraduate enrollment, since graduate student enrollment has increased over this time period by 15 FTE.

	2004	2005	2006	2007	change 2007-2004	rate of change from 2004
Undergrad	815.8	871.3	808.7	729.1	-86.7	-10.6%
Undergrad	199.5	187.9	154.9	159.9	-39.6	-19.9%
Graduate F	58.4	79.3	78.9	72.9	14.5	24.8%
Graduate N	3.4	6.0	4.8	4.0	0.6	17.6%
TOTAL	1077.1	1144.6	1047.3	965.8	-111.2	-10.3%



Summer Quarter Student FTE Trends 2004 to 2007



Class Standing Distribution

Similar to the regular academic year, summer quarter has typically been dominated by enrollment of upper-division undergraduate students. During the regular academic year, the make-up of students by class-standing is changing at Evergreen due to a shift in the make-up of the fall entering class. In spring 2007, there were 143 more lower-division students (freshmen or sophomore) compared to spring 2004. And there were 141 fewer juniors and seniors enrolled in spring 2007 compared to 2004. The proportion of freshmen and sophomores has typically been lower in summer quarter compared to their proportion of enrolled students during the rest of the academic year. The proportion of graduate students and undergraduate specials has typically been higher in summer.

SPRING quarter: All students by class standing

	2004	2005	2006	2007	change 2007-2004	rate of change from 2004
FR	382	415	490	460	78	20.4%
SO	649	624	701	714	65	10.0%
JR	1153	1253	1154	1195	42	3.6%
SR/PB	1474	1423	1363	1291	-183	-12.4%
UG special	234	180	136	150	-84	-35.9%
Graduate	248	245	274	267	19	7.7%

SUMMER quarter: All students by class standing

	2004	2005	2006	2007	change 2007-2004	rate of change from 2004
FR	22	44	46	40	18	81.8%
SO	155	253	175	183	28	18.1%
JR	424	479	399	378	-46	-10.8%
SR/PB	539	420	511	472	-67	-12.4%
UG special	345	319	234	220	-125	-36.2%
Graduate	119	137	146	133	14	11.8%