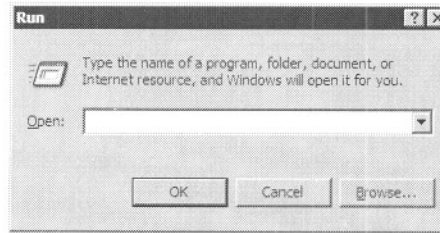


How to print to the Library printers from your Windows laptop



1. Hold down the key and press 'R'

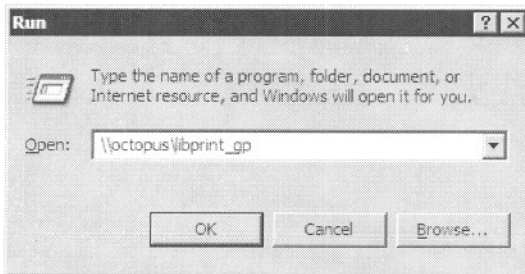
You get a box that looks like this:



2. Choose your printer

If you want to print to the printers near the main entrance, type:

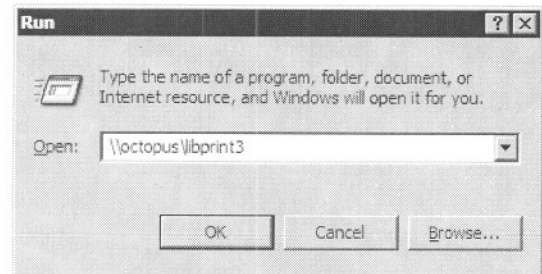
`\\octopus\libprint_gp`



or

If you want to print to the upstairs printer (near Periodicals), type:

`\\octopus\libprint3`



3. Enter your username and password

Enter the username and password of your Evergreen account. This should be the same as your Evergreen email address.

Be sure to include @evergreen.edu
(see the example on the right)

What if I don't have a username and password?

Only Evergreen students, staff and faculty can print from their laptops. Otherwise, you can still print from any of the library's public access computers.

